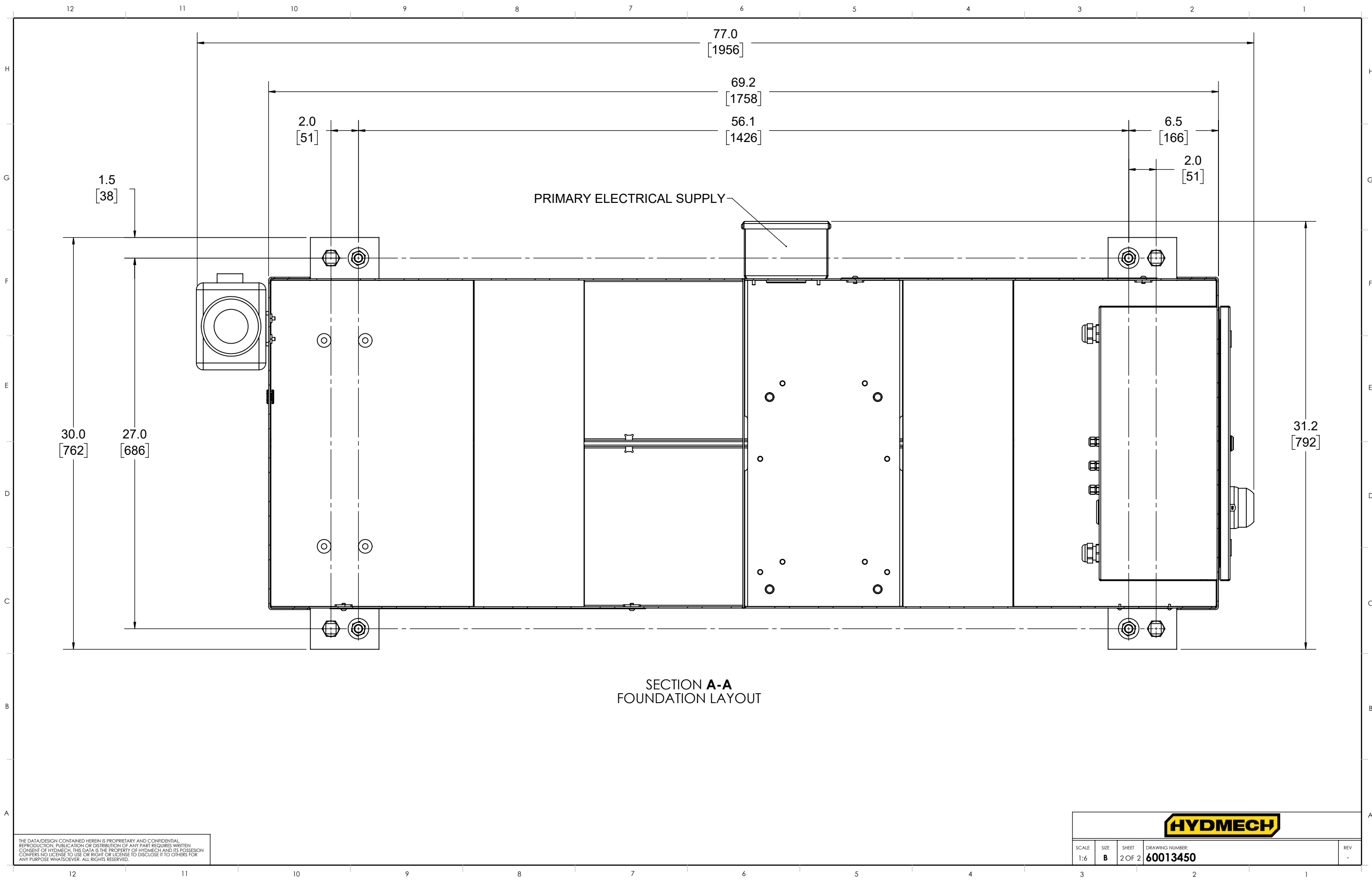


THE DATA/DESIGN CONTAINED HEREIN IS PROPRIETARY AND CONFIDENTIAL. REPRODUCTION, PUBLICATION OR DISTRIBUTION OF ANY PART REQUIRES WRITTEN CONSENT OF HYDMECH. THIS DATA IS THE PROPERTY OF HYDMECH AND ITS POSSESSION CONFERS NO LICENSE TO USE OR RIGHT OR LICENSE TO DISCLOSE IT TO OTHERS FOR ANY PURPOSE WHATSOEVER. ALL RIGHTS RESERVED.

REVISIONS				DIMENSION IN INCHES			TITLE				
REV	ECN NUMBER	DATE	BY	TOL. UNLESS SPECIFIED	MACH. & LZR	FORM. SAW, & HD PLASMA	WELD & FLM CUT	S20M IV		SIZE	
-	ECN-03006	12/01/2025	MO							B	
-	-	-	-	.X/ FRACT. ± .015	± .063	± .125		MATERIAL CODE:			
-	-	-	-	.XX ± .010	± .043	± .063		MATERIAL:		DRWN BY: MO	
-	-	-	-	.XXX ± .005	± .032	± .032		MODEL:		CHKD BY: JS	
				ANG. ±0.5°			THIRD ANGLE PROJECTION		PART WEIGHT: 1599.7 lbs		SCALE: 1:18
				√ = 125 MICRONS			S20M IV		COMPONENT GROUP: 00 - Top Level		SHEET: 1 OF 2
									DRAWING NUMBER: 60013450		REV: -





THE DATA/DESIGN CONTAINED HEREIN IS PROPRIETARY AND CONFIDENTIAL. REPRODUCTION, PUBLICATION OR DISTRIBUTION OF ANY PART REQUIRES WRITTEN CONSENT OF HYDMECH. THIS DATA IS THE PROPERTY OF HYDMECH AND ITS POSSESSION CONFERS NO LICENSE TO USE OR RIGHT OR LICENSE TO DISCLOSE IT TO OTHERS FOR ANY PURPOSE WHATSOEVER. ALL RIGHTS RESERVED.



SCALE	SIZE	SHEET	DRAWING NUMBER:	REV
1:6	B	2 OF 2	60013450	-