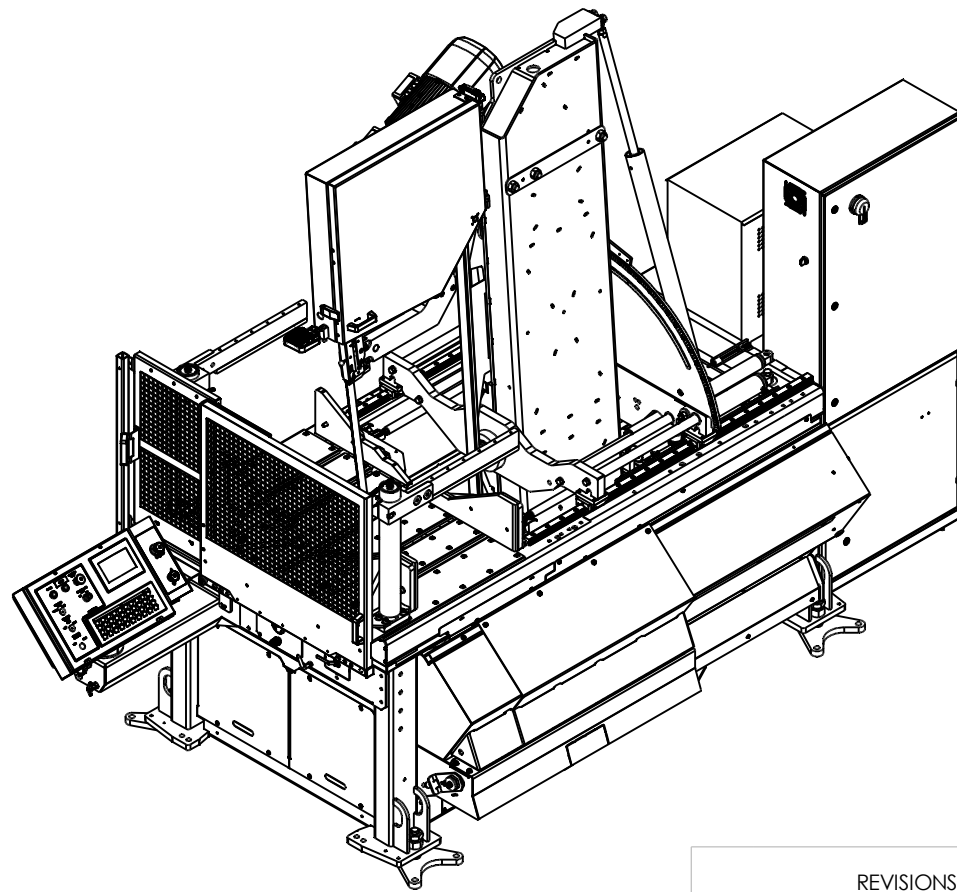
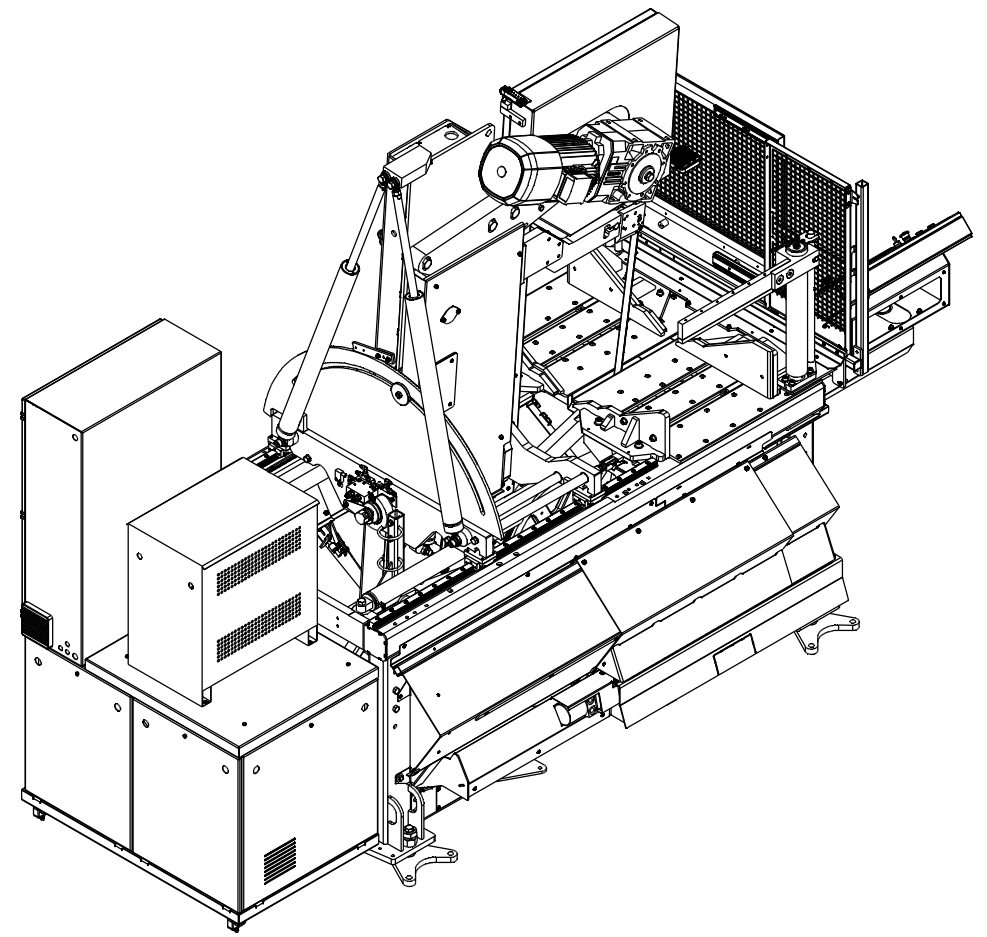
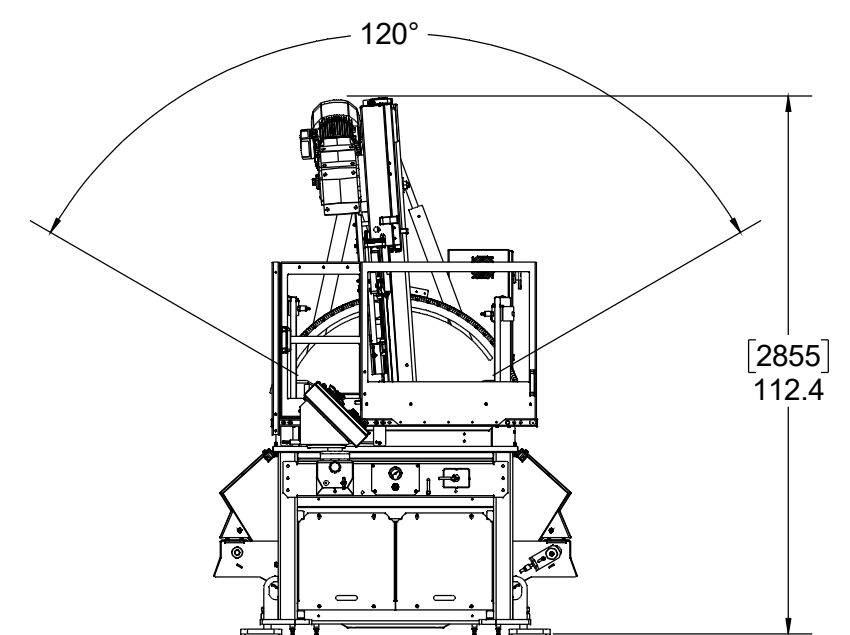
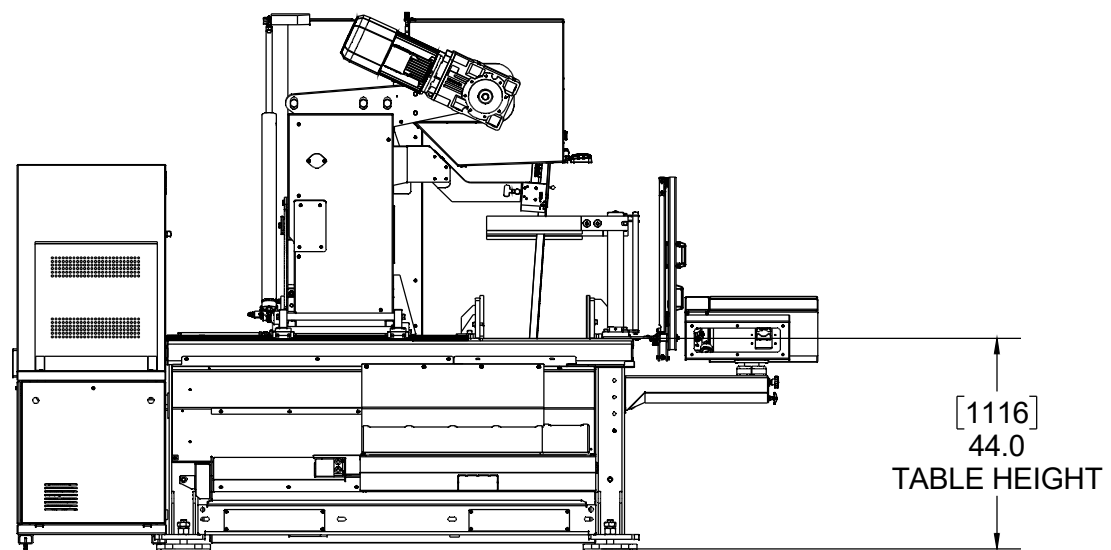
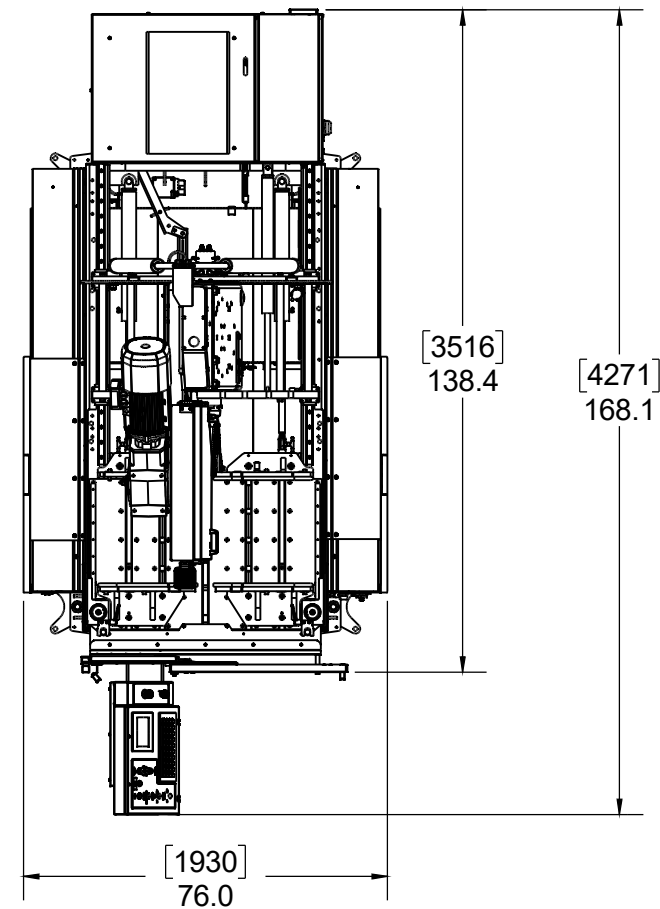
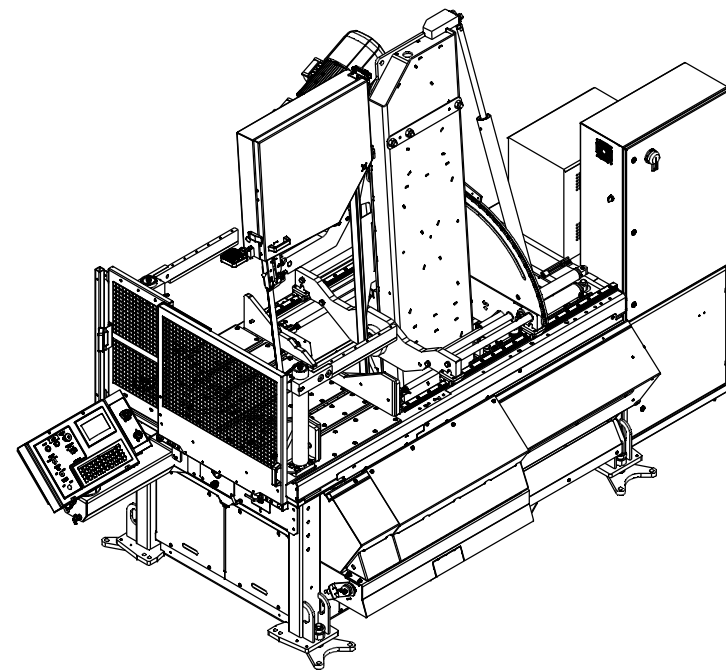


ITEM#	PART NUMBER	DESCRIPTION	QTY.
1	60005354	LH BASE ASSEMBLY	1
2	60004100	V21 HEAD ASSEMBLY	1
3	60005244	WISE ASSEMBLY	1
4	60005332	V21 CARRIAGE ASSEMBLY	1
5	60005472	CABLE ARM ASSY	1
6	60008126	INST. V21M CONTROL BOX ASSEMBLY	1
7	60005239	POWERPACK ASSEMBLY	1
8	60005353	CHIP CONVEYOR ASSEMBLY	1
9	60004985	CONVEYOR COVER	1
10	60004521	SWING CYLINDER 2.5IN.	2
11	60005024	CYLINDER, 2 ID X 25 STROKE	1
12	60005617	RH VISE ASSEMBLY	1
13	60006901	SHORT STROKE BUNDLING ARM ASSEMBLY, MAIN	1
14	60006901	SHORT STROKE BUNDLING ARM ASSEMBLY, MAIN	1
15	60007605	FRONT GUARD ASSEMBLY	1
16	60007717	FIXED TUBE	1
17	60008129	FRONT SIDE RAIL GUARD	2



REVISIONS				STANDARD HYDMECH TOLERANCES UNLESS OTHERWISE SPECIFIED		HYDMECH GROUP LIMITED WOODSTOCK, ONTARIO, CANADA N4S 0A9				
REV	ECN NUMBER	DATE	BY	TITLE	MATERIAL CODE:	MATL:	DRWN BY: RvS	CHKD BY: SJ	SCALE	SHEET
-	ECN-02133	06/09/2021	RvS	V21M			DATE: Jun 09, 2021	DATE: 2021-06-18	1:30	1 OF 4
				DIMENSIONS ARE IN INCHES	MODEL:	COMPONENT GROUP:	PART WEIGHT: 7834.425 lbs	COATING: No Coating		REV
				THIRD ANGLE PROJECTION	V21	00 - Top Level	DRAWING NUMBER: 60007716			-

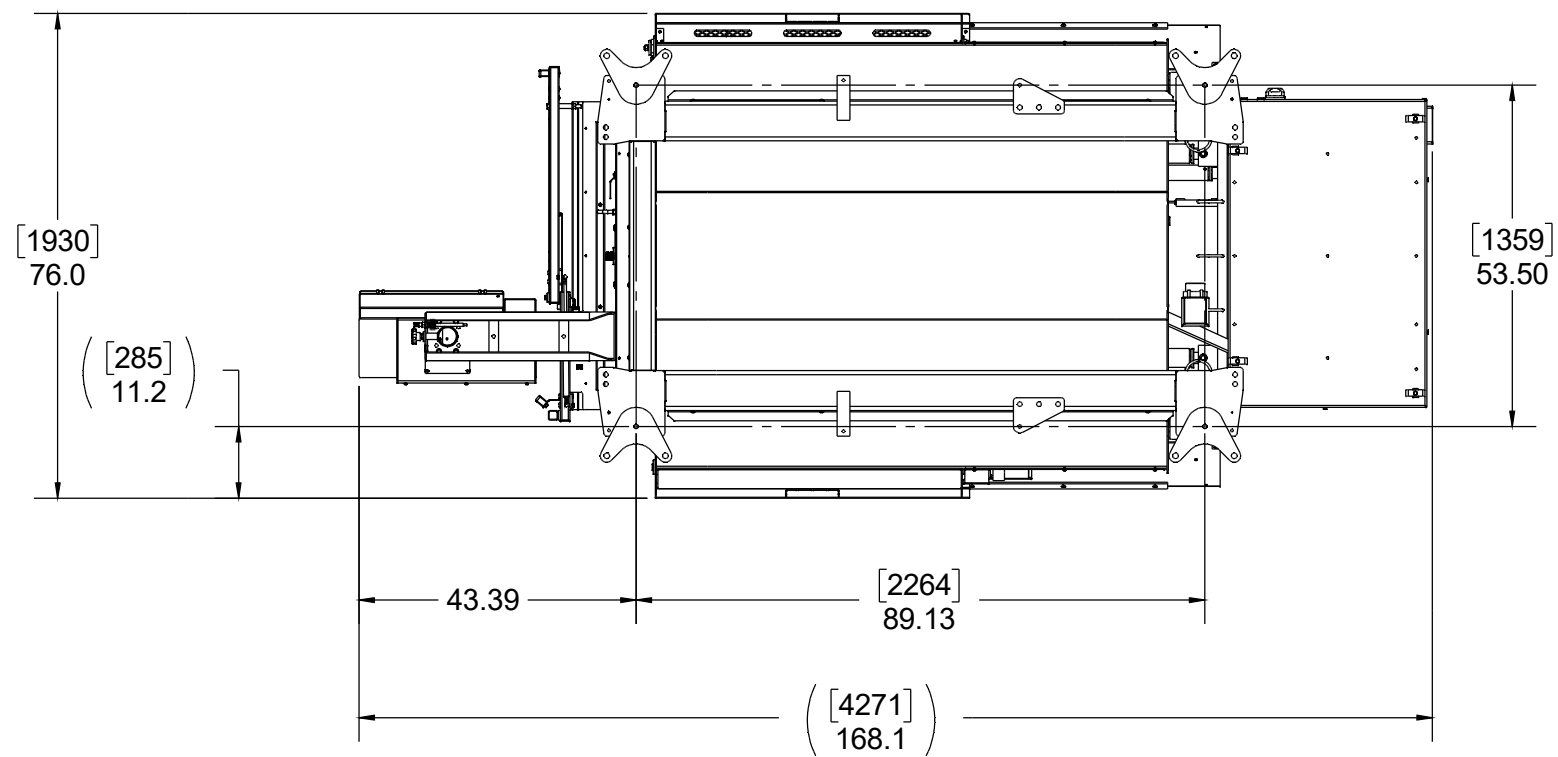
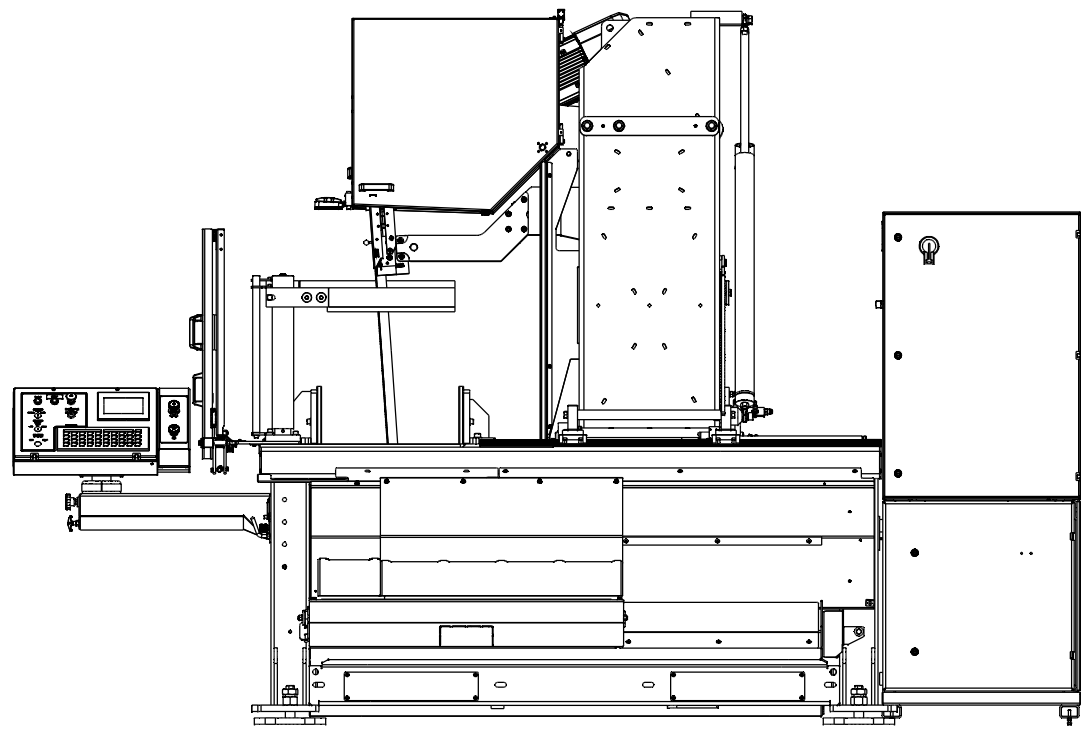
THE DATA/DESIGN CONTAINED HEREIN IS PROPRIETARY AND CONFIDENTIAL. REPRODUCTION, PUBLICATION OR DISTRIBUTION OF ANY PART REQUIRES WRITTEN CONSENT OF HYDMECH GROUP AND ITS POSSESSION CONFERS NO LICENSE TO USE OR RIGHT OR LICENSE TO DISCLOSE IT TO OTHERS FOR ANY PURPOSE WHATSOEVER. ALL RIGHTS RESERVED.



THE DATA/DESIGN CONTAINED HEREIN IS PROPRIETARY AND CONFIDENTIAL. REPRODUCTION, PUBLICATION OR DISTRIBUTION OF ANY PART REQUIRES WRITTEN CONSENT OF HYDMECH. THIS DATA IS THE PROPERTY OF HYDMECH AND ITS POSSESSION CONFERS NO LICENSE TO USE OR RIGHT OR LICENSE TO DISCLOSE IT TO OTHERS FOR ANY PURPOSE WHATSOEVER. ALL RIGHTS RESERVED.



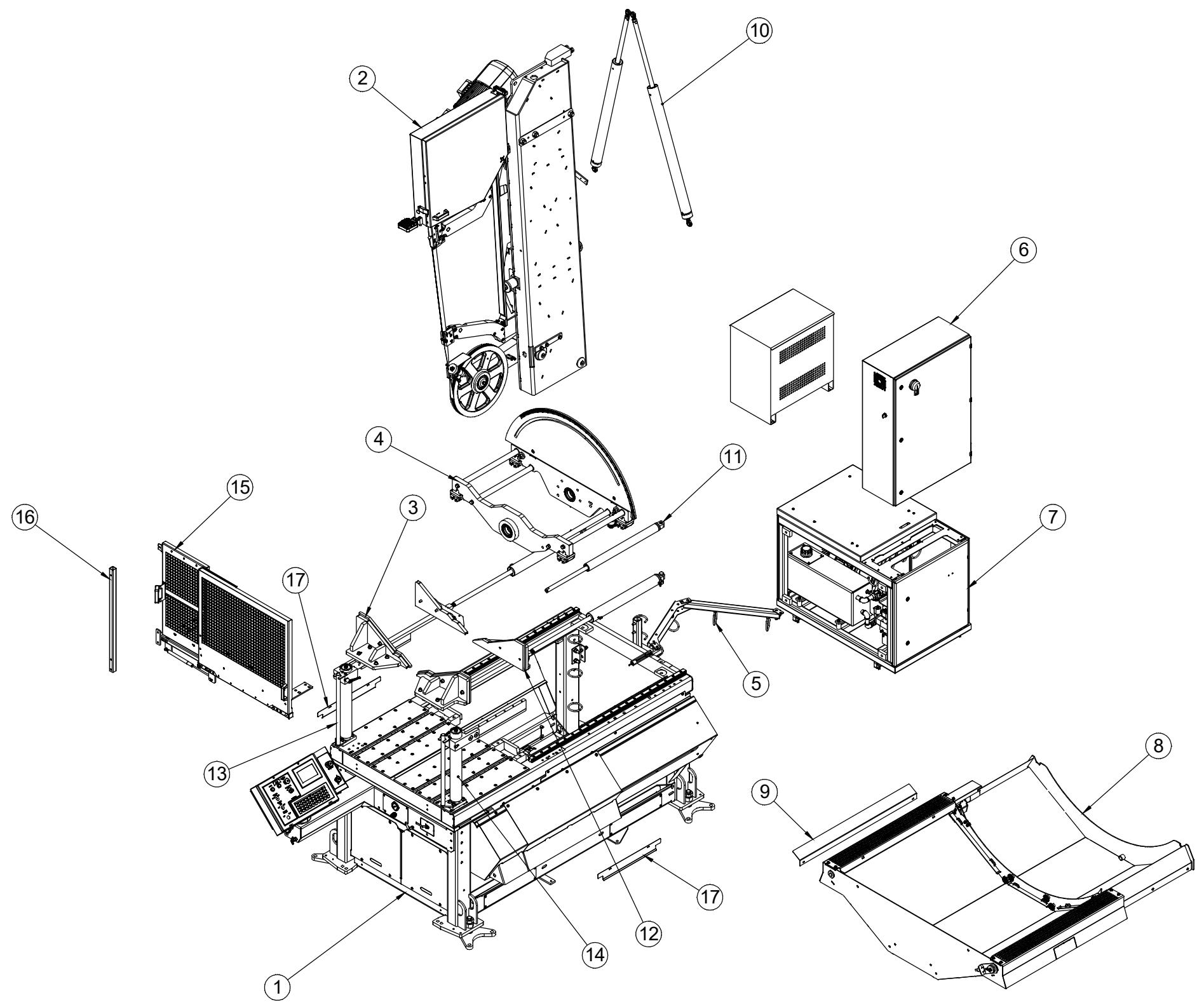
SCALE 1:40	SHEET 2 OF 4	DRAWING NUMBER: 60007716	REV -
---------------	-----------------	------------------------------------	----------



THE DATA/DESIGN CONTAINED HEREIN IS PROPRIETARY AND CONFIDENTIAL. REPRODUCTION, PUBLICATION OR DISTRIBUTION OF ANY PART REQUIRES WRITTEN CONSENT OF HYDMECH. THIS DATA IS THE PROPERTY OF HYDMECH AND ITS POSSESSION CONVEYS NO LICENSE TO USE OR RIGHT OR LICENSE TO DISCLOSE IT TO OTHERS FOR ANY PURPOSE WHATSOEVER. ALL RIGHTS RESERVED.



SCALE 1:30	SHEET 3 OF 4	DRAWING NUMBER: 60007716	REV -
---------------	-----------------	------------------------------------	----------



THE DATA/DESIGN CONTAINED HEREIN IS PROPRIETARY AND CONFIDENTIAL. REPRODUCTION, PUBLICATION OR DISTRIBUTION OF ANY PART REQUIRES WRITTEN CONSENT OF HYDMECH GROUP. THIS DATA IS THE PROPERTY OF HYDMECH GROUP AND ITS POSSESSION CONFERS NO LICENSE TO USE OR RIGHT OR LICENSE TO DISCLOSE IT TO OTHERS FOR ANY PURPOSE WHATSOEVER. ALL RIGHTS RESERVED.

HYDMECH GROUP LIMITED			
<small>WOODSTOCK, ONTARIO, CANADA N4S 0A9</small>			
SCALE	SHEET	DRAWING NUMBER:	REV
1:35	4 OF 4	60007716	-