

AROSTOP

**PREVENT MEASUREMENT AND PRODUCTION ERRORS
SAVE TIME AND COSTS**

AROSTOP systems can be used both to the left and right side of the machine they can be used with a sawing machine, drilling machine, horizontal press, punching machine or iron worker.

Transport

The systems are modular in transport friendly lengths and are delivered in a solid wooden transport box.



RELIABLE SAWS. RELIABLE PEOPLE.
877-276-SAWS www.HYDMECH.com

MEASURING SYSTEMS DIGITAL
LENGTH STOP SYSTEMS
PUSH SYSTEMS



MODELS

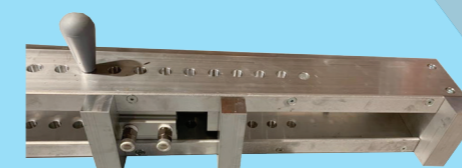
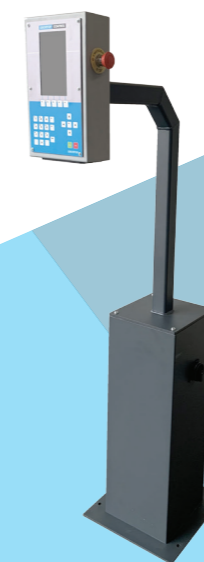
Type	Execution					
AS 30	M	Digital	S	Length measuring Automatic	A	Pusher Automatic
AS 65			S	Length measuring Automatic	A	Pusher Automatic

AROSTOP AS 30 is suitable for machines with a clamping capacity up to 350 mm.

AROSTOP AS 65 is suitable for machines with a clamping capacity from 350 mm.

MODEL AS 65 A

- Automatic length push-in system.
- Foldable automatic moving push-up trailer.
- Control panel in upright column.
- 45 mm linear guide mounted on angular steel profile.
- Applicable on the right and left side of the machine.
- 7" colour screen.
- Reading in saw frames.
- Program storage in memory or externally.



**Basic component 2075 mm
Extension 1925 mm**

Various options:

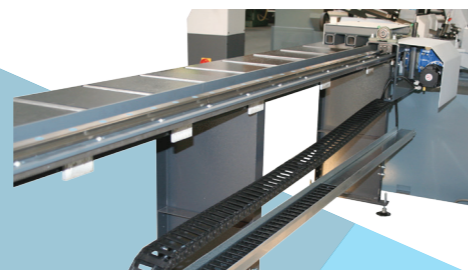
- **Roller tables**
- **Vice manual / pneumatic vice**
- **Safety protections**
- **Barcode reader**
- **Control box on high arm**
- **Connection kit for fully automatic**

ROBUST AND PRECISE



MODEL AS 30 S

- Automatic length stop system.
- Automatic flip over stop.
- Control panel in upright column.
- Linear guide of 30 mm mounted on angular steel profile.
- Applicable on the right and left side of the machine.
- 7" colour screen.



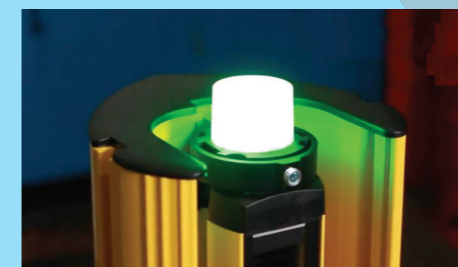
**Basic component 2075 mm
Extension 1925 mm**

Various options:

- Roller tables
- Measuring tongue
- Automatic retraction
- Barcode reader
- Control box on high arm

MODEL AS 30 A

- Automatic length push-in system.
- Automatic flip over stop.
- Control panel in upright column.
- Linear guide of 30 mm mounted on angular steel profile.
- Applicable on the right and left side of the machine.
- 7" colour screen.
- Reading in sawlists.
- Program storage in memory or externally.



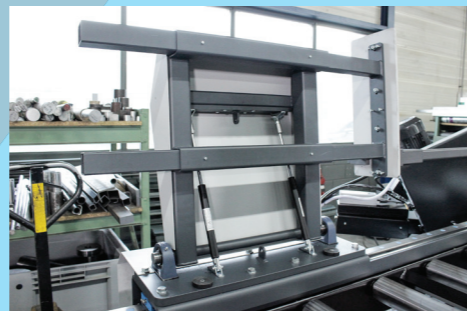
**Basic component 2075 mm
Extension 1925 mm**

Various options:

- Roller tables
- Vice manual / pneumatic vice
- Safety protections
- Barcode reader
- Control box on high arm
- Connection kit for fully automatic

MODEL AS 65 S

- Automatic length stop system.
- Automatic travel flip over stop.
- Control panel in upright column.
- 45 mm linear guide mounted on angular steel profile.
- Applicable on the right and left side of the machine.
- 7" colour screen.



Basic component 2075 mm
Extension 1925 mm

Various options:

- **Roller tables**
- **Measuring tongue**
- **Automatic retraction**
- **Barcode reader**
- **Control box on high arm**

MODEL AS 30 M

- Digital manual length measurement system.
- Manual flip over stop
- Linear guide of 30 mm mounted on steel angular profile.
- Applicable on the right and left of the machine.



Basic component 2075 mm
Extension 1925 mm

Various options:

- **Roller tables**
- **Measuring tongue**